

OUR MISSION

TO PARTNER WITH GENEROUS PEOPLE TO BUILD PERMANENT
PHILANTHROPIC RESOURCES THAT STRENGTHEN OUR REGION.

FENTON PARK, WILLIAMSTOWN, WV

*Rooted in Community,
Growing Together*

A Letter from Executive Director, Fred Rader

fred.rader@pacfwv.com



Greetings,

At the PACF, we have always believed in the enduring power of local generosity. During FY25, we awarded nearly \$4 million to nonprofit organizations and scholarship recipients across our 11-county service area. These funds represent local dollars addressing local needs—tangible impact that supports improved facilities for those who are providing access to quality childcare for working families, promoting education for students with promise and ambition and combatting food insecurity and homelessness.

This work is not new. For more than 62 years, the PACF has built and managed permanent charitable funds in partnership with local donors and fund holders to support communities across our region. Today, we steward nearly \$96 million in assets—invested wisely and managed with discipline—to ensure those resources continue to serve generations to come. In times of market uncertainty and shifting tax policies, our approach remains measured and mission-driven. We do not hastily react to turbulence; we stay focused on the fundamentals—solid investment practices, a steadfast commitment to honoring donor intent, responsive grantmaking, and an ongoing support to the communities we serve.

...On approaching an exciting new season

After serving on the Foundation's Board for more than a decade and as Executive Director for the past three years, I will retire at the end of this year. I will be joined by my wonderful wife, Carol, who is also entering retirement. Together, we look forward to spending more time traveling to be with our family and exploring the next chapter of our lives.

This is not a decision made in haste. It is the result of thoughtful consideration, and it is made with full confidence in the Foundation's stability and direction. Over the years, I have viewed my role not as the owner of this work, but as a steward—a caretaker of something much larger and more enduring than any one individual. I've had the honor of serving as the captain of a well-built ship, one with a strong hull, an experienced crew, and a clearly charted course.

The Board of Directors has engaged a professional executive search firm to lead the process of selecting the Foundation's next leader. The search will be conducted over the summer, with interviews expected to commence in the fall. The ideal candidate will have a true understanding of the Mid-Ohio Valley—both its needs and its people—and will lead with integrity, skill, and a deep appreciation for our mission. This leadership transition marks not an end, but the beginning of a new season—one that is vital to our region's future.

The PACF is in a position of strength. We are guided by clear values: generosity, learning, integrity, inclusion, and collaboration. Our purpose remains unchanged—to serve this region faithfully, to uplift those doing meaningful work, and to partner with those who care deeply about its future.

Thank you for your trust, your partnership, and your shared belief in the good we can accomplish—together.

Sincerely,

Fred Rader

Fred Rader
Executive Director





Mayor Alan Haught presents scholarship awards to ten graduates in Ritchie County. In total, 34 scholarships were awarded totaling \$65,450.



Brice Michael Byham English Achievement Award of \$2,900 will send 14 PHS Students to a yearbook conference in Orlando, FL.



The Robert E. Lowe, Jr. Memorial Scholarship was awarded by the first-ever recipient and recent college graduate, Madelyn Lynch. Receiving the award was Phillip McClung of Wirt Co.



The DCCF and PACF funds have given \$10,000 to support programs like the Doddridge County Farmer Market, which hosts a "Little Sprouts" market for young horticulturists.



Representatives from 12 nonprofits gathered to celebrate spring grant awards in Ravenswood. Grants awarded from the Fund for Ravenswood and the PACF totaled \$111,850.



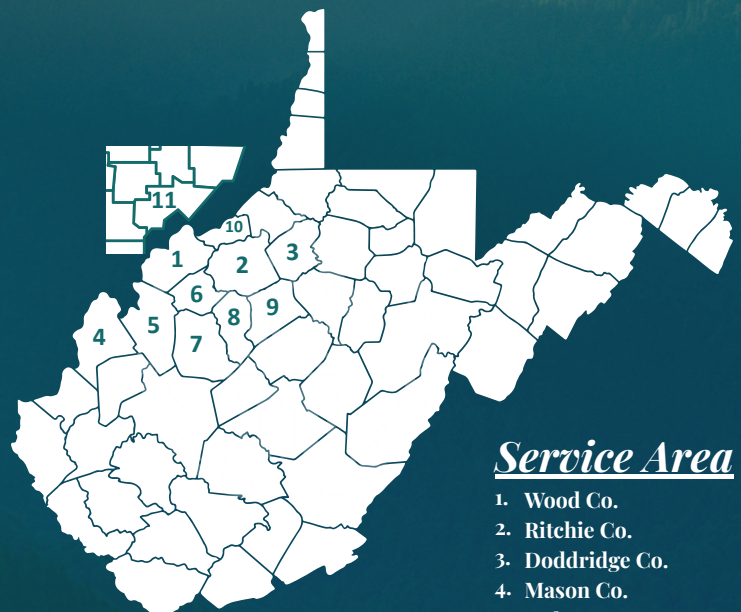
Williamstown Fund for Excellence advisors presented a check for \$3,500 to the City of Williamstown to support Free Swim Fridays and the Bee City Project.



Board member, Lexi Miller, and PACF staff member, Julie Posey present a \$20,000 Community Action Grant check to Rick Poling to support the Calhoun Co. Committee on Aging.



2025 Impact Grant Recipient, Community Resources, Inc. will expand the capacity of Bright Beginnings Child Care Center from 60 to 130 with a new facility in Vienna, WV.



Service Area

1. Wood Co.
2. Ritchie Co.
3. Doddridge Co.
4. Mason Co.
5. Jackson Co.
6. Wirt Co.
7. Roane Co.
8. Calhoun Co.
9. Gilmer Co.
10. Pleasants Co.
11. Washington Co. (OH)

PARKERSBURG AREA COMMUNITY
Foundation
& REGIONAL AFFILIATES

BRING YOUR DONOR-ADVISED FUND HOME

Why Moving Your Fund to the PACF Makes Sense

Many donors hold donor-advised funds (DAFs) with national providers but may not realize those funds can be transferred to the PACF, offering unique benefits.

- 1** Let the PACF help you simplify and streamline your charitable giving. When your DAF is with the PACF, enjoy easy access to your fund through our secure online portal or local staff. Contributions into your fund are simple too — the PACF accepts cash, stock, or other assets seamlessly. Funds can be opened with a minimum gift of \$10,000, with the option to build over time.
- 2** You may also be able to continue working with your trusted financial advisor. The PACF welcomes collaboration when appropriate to align your charitable giving with your broader financial goals. The PACF team will assist you in establishing your fund and recommend a grant from your current provider to fund it. Most or all of your balance can be transferred at once.
- 3** What sets the PACF apart is our local knowledge and personalized service. Our staff helps donors direct gifts to causes that matter most locally—whether education, health, basic human needs, or the arts. Last year, donor-advised funds at the PACF granted more than \$1.5 million to support nonprofits in the region.
- 4** Administrative fees are modest—less than one percent—and reinvested into the community to sustain the PACF's mission. Transferring your donor-advised fund to the PACF is a straightforward, tax-neutral process.
- 5** Holding your DAF at the PACF also eases estate planning. Because your fund is managed locally, your family or executor will have direct access to experienced staff to ensure your charitable legacy is preserved with clarity and care.

Bringing your donor-advised fund home means your giving stays close to your heart and your community. To learn more or begin the process, please contact: Julie Posey, Senior Development and Stewardship Officer by emailing julie.posey@pacfwv.com or by calling 304-428-4438.

If you wish to receive our monthly e-newsletter updates, please email media@pacfwv.com

From Ms. to Mrs.



Office Manager Emily Buck married Brian Wigal in May. The newlyweds are pictured with PACF staff. Emily's new email is emily.wigal@pacfwv.com



Important Dates:

- PM Company's Spirit of Giving application is open from July 1 until August 30
- Fall Community Action Grant application is open from July 15 until September 15
- Fund for Ravenswood Fall application is open from July 15 until September 15
- Julie Posey will be at the Harrisville High School Alumni golf tournament on Friday, July 18
- Young Professionals social at Fort Boreman Park on August 8 at 5:30 PM
- West Virginia Central Federal Credit Union Day of Giving grant application is currently open until August 30
- DCCF to host 25th Anniversary Celebration at Doddridge Co. Park on October 23 at 5:00 PM
- Professional Advisor Education Fall 2025

***We note with sadness, the passing of former board chair, Shirley Whitaker, who served the PACF during the late 80's and early 90's.*

Local nonprofit honors Wilma High's gift of service and strategic funding...

Board members and staff of Consumer Credit Counseling Service of the Mid-Ohio Valley (CCCS) gathered at the PACF building to present a commemorative plaque honoring the enduring legacy of Wilma High. This gesture not only acknowledges Wilma's significant contributions but also underscores the profound impact of her charitable vision.



In 2020, Robert (Bob) High, Wilma's husband, established the Wilma High Charitable Fund through the PACF, ensuring that Wilma's commitment to community service would continue to benefit the Mid-Ohio Valley for years to come. The fund, established as part of Wilma's estate plan, directs support to four causes in the region over a period of ten years, with CCCS being one of the primary beneficiaries.

Wilma High, a retired accountant, found purpose in volunteering her expertise to local organizations. Her journey with CCCS began when she offered her accounting skills to assist the organization during a transitional period. Shelene Shrewsbury, Executive Director of CCCS, recalls, "Wilma came to us at a pivotal time, bringing not just her skills but a calm, steady presence that helped us navigate financial challenges and organizational transitions."

Her husband, Bob, also became deeply involved, assisting with manual tasks and organizational efforts. Shelene fondly remembers, "Bob was always there, whether it was moving boxes, shredding decades of outdated files, or teaching financial literacy classes. Their combined efforts were a testament to their dedication."

The impact of the Wilma High Charitable Fund extends beyond CCCS's operations. Shelene reflects, "This fund has been a lifeline for us, especially during times when we needed support to stabilize and grow. It's not just financial assistance; it's a legacy of mentorship and community spirit. Receiving this support allowed us to focus on strategic initiatives, like expanding our outreach to Jackson County. It's a direct result of donors who understand that investing in capacity-building is essential for long-term success."

Moreover, the fund has inspired CCCS to engage more actively in fundraising and community awareness efforts. Shelene shares, "After receiving this gift, we launched our first annual appeal and have seen a positive response. It's encouraging to see how *one donor's vision can spark broader community involvement.*"



"IT'S ABOUT STANDING IN THE GAP FOR OTHERS, CREATING OPPORTUNITIES, AND LEAVING A LEGACY THAT EMPOWERS FUTURE GENERATIONS." - SHELENE

The story of Wilma and Bob High underscores a fundamental truth: *philanthropy is not just about financial contributions but about building relationships and sharing talents.*

The Wilma High Charitable Fund serves as a reminder that true impact arises from the intersection of generosity, mentorship, and community engagement. In honoring Wilma's legacy, we celebrate not just a donor but a mentor whose influence continues to resonate throughout the Mid-Ohio Valley.



To learn more about formalizing your own charitable legacy, please visit our website, <https://pacfsv.com/giving/legacy-society> or call our team to schedule a meeting.

SCHOLARSHIPS PLANT SEEDS OF COMMUNITY

Brooke Higgins



Belpre, Ohio

This success story was made possible by people who believe in the power of education to uplift our region and strengthen the communities we call home. The investment did more than open the door to college—it helped shape a passionate educator and proud mom. Today, Brooke Higgins (Cieslewski), recipient of the 2013-2016 Lubeck Elementary Teacher Memorial Scholarship is raising her family in the same community that once supported her, and she's pouring that intentionality right back into the next generation—one student at a time. Her story is a powerful reminder that when we invest in people, our whole community grows.

TELL US ABOUT COLLEGE—THERE'S NO SUCH THING AS TOO MUCH DETAIL!

At West Virginia State University, I was a four-year collegiate volleyball athlete, president of the historical society, and a member of Kappa Delta Pi, the education honor society. These organizations helped me build lasting connections, volunteer in the community, and expand my learning beyond the classroom.

HOW DID COLLEGE PREPARE YOU FOR YOUR CAREER?

At WV State, I had the most wonderful professors, who prioritized hands-on classroom involvement and real-world experiences. One of the most valuable parts of my education was the opportunity to observe in a variety of Charleston-area schools. Those experiences deepened my understanding of school pride, community engagement, the challenges schools face, and how teachers work to meet the needs of students in diverse settings.

TALK TO US ABOUT YOUR DECISION TO RAISE YOUR FAMILY IN YOUR HOMETOWN. WHAT DOES THAT MEAN TO YOU?

One of the greatest blessings of raising my family in my hometown area of Wood County is being close to both my parents and in-laws! Their support through every phase of life has been incredible. My parents' constant faith and encouragement helped shape my work ethic, perseverance, and my passion for advocating for students.

Having both sets of grandparents nearby means they're a part of our everyday lives—from helping with childcare to being there for the little moments that matter. It gives my children a strong, loving foundation! We get to share traditions, celebrate milestones together, and support one another through life's ups and downs. While moving away might have brought new experiences, staying close to family has given us something even more meaningful: connection, stability, and a deep sense of belonging.

HOW DID SCHOLARSHIPS LIKE THE LUBECK ELEMENTARY TEACHER MEMORIAL SCHOLARSHIP AID IN YOUR EDUCATION?

Instead of facing the constant stress of financial burdens each semester, I was given the space to focus fully on my studies. That ability to concentrate on my education helped me grow into a stronger professional—while still in school! It directly impacts the work I do today as a teacher. Not everyone gets the opportunity to reduce that kind of stress, and I will always be grateful for the support I received!



In 2025, the PACF received a record-breaking 1,100 scholarship applications. In May of 2025, the Foundation awarded more than \$660,000 in scholarships, in support of 320 individual awards.

Story continued on next page...

WHAT DO YOU LOVE MOST ABOUT YOUR JOB?

I've been at Belpre Elementary School for seven years—five of them as a kindergarten teacher! I absolutely love creating real connections with my students. Through those relationships, I discover their individual strengths—and as a teacher, I get to build on those!

When students feel seen and valued, they develop the confidence to take academic risks, dive deep into learning, and push through challenges. Every child deserves the chance to succeed by being met where they are—both academically and behaviorally—and by having their unique strengths celebrated! There's nothing more rewarding than watching a student light up with confidence when their true potential is recognized and nurtured.

HOW DO YOU SERVE YOUR COMMUNITY—AND WHY IS THAT MEANINGFUL TO YOU?

I love supporting our community through local libraries, youth organizations, school fundraisers, and small businesses! Libraries are especially close to my heart—they provide free access to resources, information, and events that bring people together. Supporting them strengthens community bonds and opens up opportunities for everyone!

I also support student fundraisers for school sports, band, travel leagues, dance programs, and Parent-Teacher Organization holiday gift initiatives. These efforts help ensure that every child feels included and supported, no matter their circumstances.

I make a point to shop at local markets to support small businesses! It helps keep resources in our community and builds personal relationships with the people who make our town special. These small actions truly matter. They strengthen the backbone of our community—our people! When we invest in each other, we create a more connected and thriving place to live.

WHAT DO YOU HOPE THE FUTURE OF YOUR COMMUNITY LOOKS LIKE FOR YOUR CHILDREN?

I want a community built on support and rooted in humanity! As Jiang Yurong said at Harvard's 2025 commencement, *"We don't rise by proving each other wrong. We rise by refusing to let one another go."* That message resonates so deeply with me.

I want my children to grow up in a place where inclusivity, compassion, and connection are the norm. A place where they are supported, where their happiness matters, and where their community truly cheers them on! Everyone deserves to feel valued—and I want that to be a reality for every child in our community.



WHAT IS YOUR FAVORITE PART OF YOUR COMMUNITY?

My favorite part of our community is how deeply it supports our schools! That support allows our students—and our entire community—to thrive. When we invest in the next generation, we're building a stronger future for all of us. I'm so proud to be part of a community that values education and youth development the way ours does!



Learn more about creating a scholarship fund by scanning the QR Code with your phone's camera or call 304-428-4438 to request information.





Meet Ashley Knight, of Ritchie County, who recently joined our team as Communications and Outreach Specialist, pictured here with Amy Nahley and Fred Rader.

As part of our strategic plan—and in response to the growing number of new funds established and the increased demand for scholarships and grants—we added a new staff position this spring focused on communications and outreach. This role strengthens our ability to share stories of impact and deepen relationships with charitable partners, fund holders, and new philanthropists. It has also enabled our team to focus more fully in their areas of expertise as workloads have grown. These efforts are helping us meet increasing demand while staying rooted in our mission. We carry this work forward with a strong and experienced staff, an engaged Board of Directors, and a network of supporters who understand that meaningful change is built over time and through trusted relationships.

The LKACF is seeking civic-minded individuals to join its efforts to strengthen community leadership through service on its Advisory Board. In FY25, two generous gifts to the Gilmer County Grantmaking Fund will increase the region's charitable capacity.



On Thursday, October 23 the DCCF will host a reception to commemorate 25 years of impact! The event will be held at Doddridge County Park from 5-7 PM.

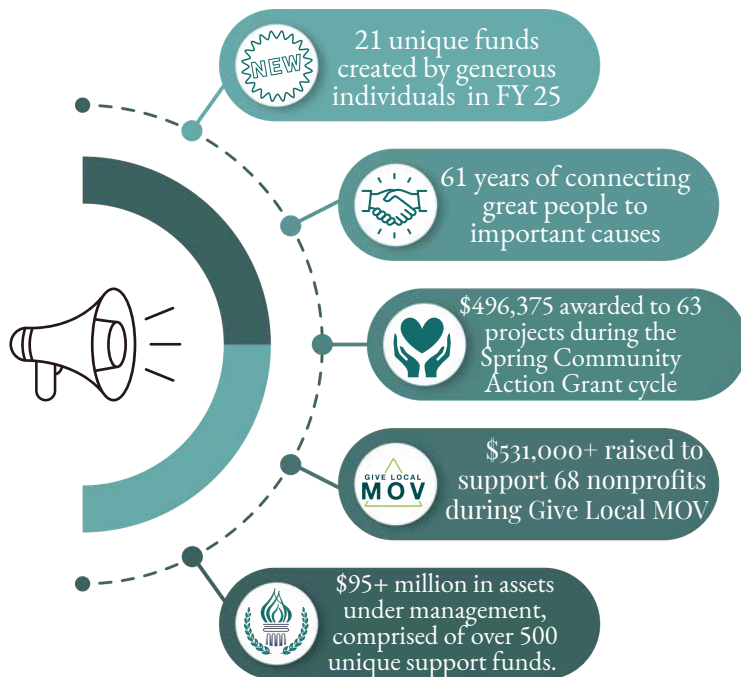


Friday, July 18 is the annual Harrisville High School Alumni Golf Tournament at North Bend Golf Course. The tournament committee collects hole sponsorship proceeds to grow the H.H.S. Alumni Scholarship! In May, the Scholarship awarded \$15,540 to 10 students in Ritchie County. Great teamwork to all!



YOUR VOICE MATTERS!

If you visit our Facebook or Instagram "Story" on Fridays, you will find 5 fast-facts to keep you updated on our impact. Consider talking about your favorite fact with someone new to help us inspire good for the communities we live in and love. Find us @pacfwv.



We publish news updates on our website, pacfwv.com. Please scan the QR code to access all of our news articles.

